



Signature
ART PRIZE 2011
ASIA PACIFIC BREWERIES FOUNDATION

ACTIVITY BOOKLET

11 November to 4 March 2012, Singapore Art Museum

Recommended for ages 5 and above



Welcome to the Singapore Art Museum.

There are many different and exciting artworks created by artists from different parts of Asia-Pacific for you to explore here.

Use this book and to help you find your way around the galleries, and to know the artists and their works better:

Look for the artworks in the galleries.

See what is being shown or projected on the screens.

Think about how the artist created the artwork, and what he or she might want to tell you through the work.

But before you start, do remember:

1. The artworks and equipment used are fragile so try not to touch them or stand too close to them.
2. Walk around the galleries slowly when you admire the artworks as you may hurt yourself if you run around.
3. If you have a big bag with you, get your parents or teachers to leave it in the lockers at the reception area.
4. If you have food and drinks, do only consume them in the plaza area as they are not allowed in the galleries and will invite pests to hurt the artworks.

Ask your parents or teacher for help if you need someone to explain to you the things you do not understand.

Have fun exploring!

Introduction

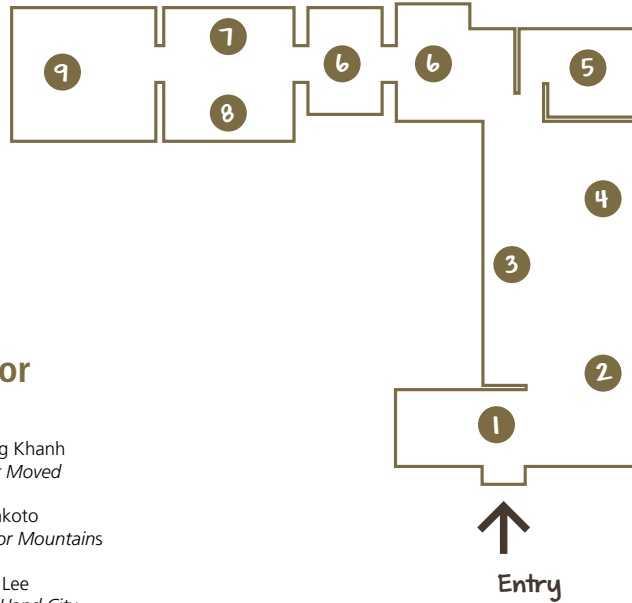
Welcome to the Asia Pacific Breweries Foundation Signature Art Prize 2011 Finalists Exhibition!

The Signature Art Prize recognises artists whose works represent a significant development in contemporary visual art in the Asia Pacific region. The competition is open, by nomination, to all visual artworks, regardless of medium, subject matter and size.

This exhibition presents the 15 finalist artworks which have been nominated and shortlisted by an international jury. It is thus an excellent opportunity to see and discover some of the most exciting contemporary art produced in this dynamic region in the last three years.

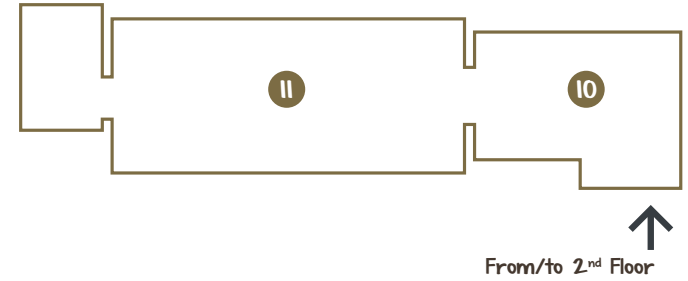
It's time to get to know the artworks in this competition better!

Exhibition Map



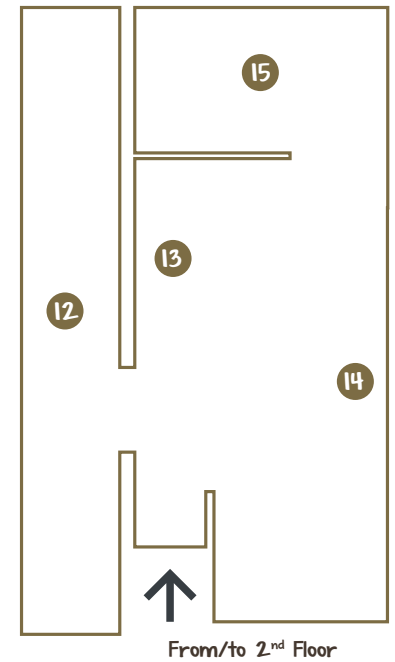
2nd Floor

1. Bui Cong Khanh
The Past Moved
2. Aida Makoto
Ash Color Mountains
3. Michael Lee
Second-Hand City
4. Yang Xinguang
Thin
5. Daniel Crooks
Static No.12 (seek stillness in movement)
6. Vandy Rattana
Bomb Ponds
7. Rodel Tapaya
Baston ni Kabunian, Bilang Pero di Mabilang (Cane of Kabunian, numbered but cannot be counted)
8. Chang Yoong Chia
The World is Flat
9. Ay Tjoe Christine (in collaboration with Deden Sambas)
Lama Sabakhtani #01



1st Floor

10. Imran Qureshi
You who are my love and my life's enemy too
11. Sheba Chhachhi
The Water Diviner



3rd Floor

12. Greg Semu
The Last Cannibal Supper
13. Kim Jongku
Mobile Landscape
14. Kyungah Ham
Needling Whisper, Needle Country/Embroidery Project
15. Chen Chieh-jen
Empire's Borders I

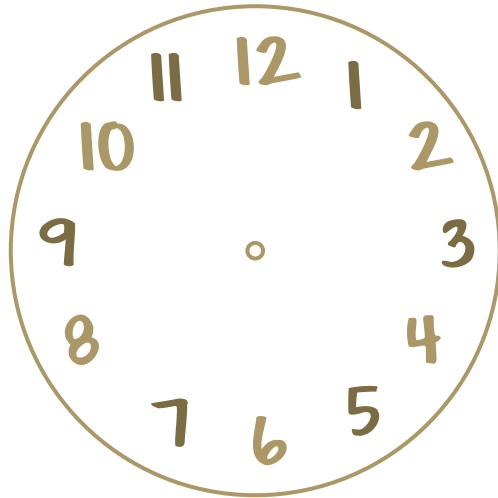
The art works in this exhibition were created by artists from the Asia Pacific region.

Do you know where the Asia Pacific region is?

1. The countries you see here in the map belong to the Asia Pacific region. Colour them in as many different colours as you can!



2. Look at your watch or your parent's watch. What time is it now? Record the time in the clock you see below by drawing in the hour hand and the minute hand as you see it in the watch!



3. What are you doing right at this moment?
Complete the sentence below!

I am _____

You have just recorded your movements by noting the time you did them, and writing them down in this book.

How do you feel?



Daniel Crooks, *Static No. 12 (seek stillness in movement)*, 2010, single-channel HD video, colour, sound, dimensions variable (5:23 mins), artist collection.

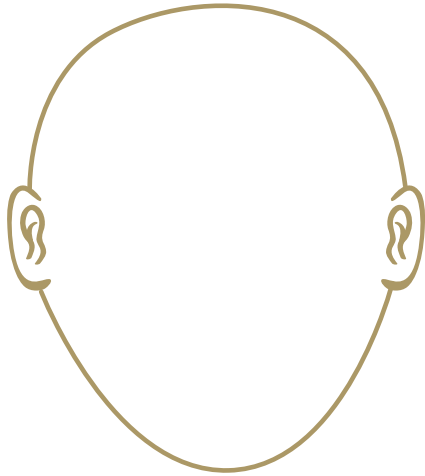
Static No. 12 (seek stillness in movement) looks at the idea of using video and moving images to think of time in a physical way. Australian artist Daniel Crooks was inspired by groups of older people doing exercises early in the morning in a public park in Shanghai to create this work. There, he came across a man practicing "Tai-chi" exercises on his own and decided to film his movements and actions.

Amazed by what he recorded, Daniel Crooks read up more about the movements and found inspiration in the concept of "stillness in movement". This idea is what he is trying to capture here in his work, through the shifting of still forms to show the passing of time.

Isn't this an interesting way to look at time?

Image courtesy of the artist and Anna Schwartz Gallery.

4. Watch *Empire's Borders I* closely and look at the faces and expressions of the people shown in the video. Draw a picture of one emotion you can see in the space here.



5. Have you ever travelled abroad before? Which countries have you visited before? Which countries do you wish to visit and why?

6. How would you feel if you were not allowed to visit the country you wanted to go to?



Chen Chieh-jen, *Empire's Borders I*, 2008 – 2009, single-channel video, continuous loop, colour and black and white, sound, dimensions variable (26:50 mins), artist collection.

Empire's Borders I was created based on Taiwanese artist Chen Chieh-jen's experience during a visit to the American Institute of Taiwan (AIT) to apply for a United States **visa**. There, an officer conducting the visa interview accused him of wanting to remain in the United States illegally. However, Americans travelling to Taiwan do not need a visa. Chen Chieh-jen found this system very unfair and created this work to look at how countries keep an eye on and control citizens of other countries with their border control procedures.

Do you think there any good reasons why certain people should not be allowed to enter a country?

Glossary

Visa – An official authorisation in a passport allowing entry and travel within a country

Image courtesy of the artist.

7. Look closely at this artwork. It is done using traditional North Korean hand embroidery. Where else have you seen hand embroidery work before?

8. How have people sent secret messages to each other in the past? List down 2 examples you can think of.



Kyungah Ham, *Needling Whisper, Needle Country / Embroidery Project*, 2009 – 2010, North Korean hand embroidery on silk; total 9 pieces, various dimensions, Uli Sigg and artist collection.

Communication between South and North Korea is not allowed because of the political conflict and differences between the two countries, and *Needling Whisper, Needle Country / Embroidery Project* is an effort by South Korean artist Kyungah Ham to communicate with North Koreans through art.

Finding agents who could go back and forth between North and South Korea, Kyungah Ham printed images that she created based on news articles and phrases that convey emotions like “I’m Hurt” and “I’m Sorry” to be sent to North Korean workers. The images are then reproduced using traditional North Korean hand embroidery techniques you see here.

Imagine how it difficult it can be to communicate with someone you are not allowed to talk, write, or email to directly!

Image courtesy of the artist.

9. What do you find most interesting about this painting?

10. There is a cheery, happy face hidden in the details of this big painting. Can you spot it?



Aida Makoto, *Ash Color Mountains*, 2009 – 2010, acrylic on canvas, 300 x 700 cm, Taguchi Art Collection. Image courtesy of the artist, Taguchi Art Collection and Mizuma Art Gallery.

Ash Color Mountains is a painting by Japanese artist Aida Makoto. At first glance, the art work looks like a painting of misty mountains in a calm, peaceful setting. However, upon closer looking, the mountains are actually made up of businessmen piled on top of one another.

The peculiar image of a mountain made up of humans shows how the artist feels towards the leading occupations in developed countries and major cities in the world, like banking and retail. Many men working in these industries wear the business suit, which is used as a **motif** by the artist in the painting.

What do you think happened to these people who make up the mountains you see here?

Glossary

Motif – An idea or pattern that is repeated in an artwork

Image courtesy of the artist, Taguchi Art Collection and Mizuma Art Gallery.

11. Look at this art work – what does it look like to you?

12. What colours can you see in this art work? Name them!

13. Look at the images in this art work – do you recognise any of them?
What countries do you think they represent?



Chang Yoong Chia, *The World is Flat*, 2010, postage stamps and adhesive, 84 x 134 cm, artist collection.

The World Is Flat is a **collage** made entirely out of postage stamps by Malaysian artist Chang Yoong Chia. Stamps used to make people wonder about the countries they came from because the images and information on stamps usually represent something important or typical of the country. Since the arrival of the internet, however, people seldom send out letters now and stamps are not as widely used as before.

A painstaking and time-consuming work of collecting, cutting, sorting and pasting of thousands of stamps over a period of nine months, *The World Is Flat* represents Chang Yoong Chia's attempt to think about the history of the world, understand the formation of countries, the relationships between them and how people are affected by these consequences.

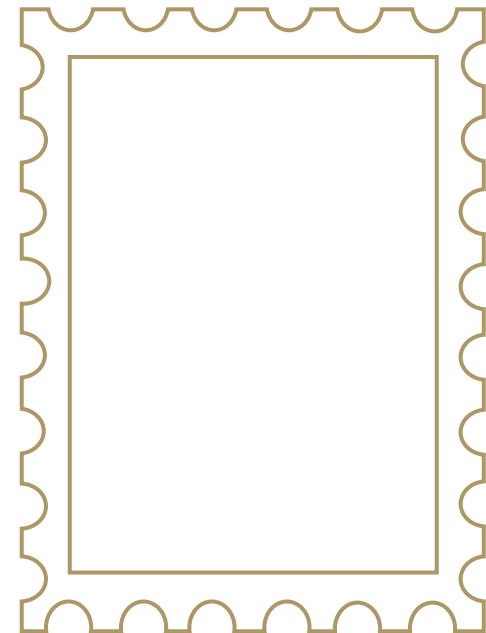
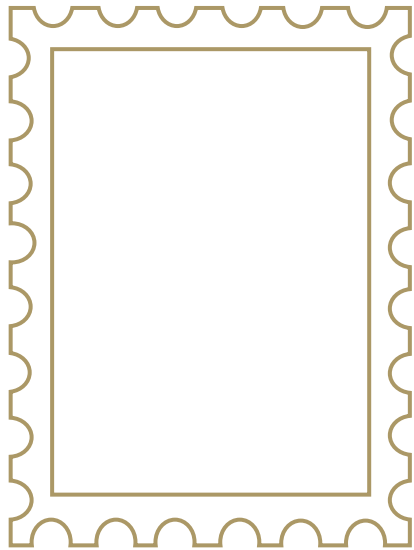
Does this art work make you think of stamps in a different way?

Glossary

Collage – A form of art where various materials like paper or fabric are arranged and stuck to a backing

Image courtesy of the artist.

14. Design your own stamps in the spaces here!



15. What is your favourite place in your neighbourhood? Draw it out in this space here. Remember to draw yourself in the picture too!

16. How do you feel when you are in your favourite place in the neighbourhood?

17. How would you feel if that place was changed and becomes unrecognisable?



Bùi Công Khánh, *The Past Moved*, 2010, Charcoal on paper backdrop and 8 photographs, drawing installation: 300 x 200 x 241 cm; photographs: 50 x 75 cm each, artist collection.

The Past Moved is an **installation** that looks at the idea of recording and preserving history and memories.

Knowing that his hometown area will soon demolished to make way for a new tower block, Vietnamese artist Bùi Công Khánh created an imaginary backdrop of this soon-to-be-torn-down neighbourhood and invited people to pose against it for photographs. This art work is his way of asking us to think about the past, its importance and the way it is recorded.

Do you think photographs can help preserve history and memories?

Glossary

Installation – A type of art that is site-specific and three-dimensional, designed to transform how people look at a space

Image courtesy of the artist.

18. Look at the sculptures here – what kind of forms and shapes can you see?

19. Try imitating their shapes with your body and ask your friends or parents to see how well you can do it!



Yang Xinguang, *Thin*, 2009, wood, various dimensions, artist collection.

Thin is an artwork made of wooden **sculptures** created by Chinese artist Yang Xinguang. Using an axe, the artist hacked away at pieces of wood to achieve the thin, scraggly sculptures that you see here in this work.

Yang Xinguang's chopping and hacking of the wood is similar to what farmers in northern China do to the branches of their fruit trees during winter in order to ensure a good harvest. The wood used in this work are actually branches that the farmers have thrown away as a result of this practice.

Do you think these sculptures look like something you might have seen before?

Glossary

Sculpture – An art form made by carving, casting or other shaping techniques
Image courtesy of Boers-Li Gallery.

Which art work was your favourite?
Write down the name of the artwork,
the artist who made it, and draw a
picture of how it looks like here.

Suggested answers

1. Free response.
2. Free response.
3. Free response.
4. Free response.
5. Free response.
6. Free response.
7. Free response. E.g. Clothes, bags, etc.
8. Free response. E.g. Pigeons, mooncakes, etc.
9. Free response.
10. Free response.
11. A world map.
12. Blue, orange, yellow, green, white, red, black, etc.
13. Free response.
14. Free response.
15. Free response.
16. Free response.
17. Free response.
18. Free response.
19. Free response.

General Information

OPENING HOURS

Mondays to Sundays | 10am to 7pm

(Last admission at 6:15pm)

Fridays | 10am to 9pm

ADMISSION

Adult \$10

Student, Senior Citizen 60 years and above and Regular (with valid 11B pass) * \$5

20% off admission tickets for 20 or more persons.

* Unless otherwise stated, admission is free for visitors 6 years and below, Singaporean and PR students and senior citizens, NSFs and teachers from local schools.

Free admission to SAM every Friday from 6pm to 9pm and on Open House days.

Admission ticket includes \$1 SISTIC fee and is available from SAM Information & Ticketing Counters and SISTIC.

Please present proof of eligibility to enjoy concessions or free admission.

MUSEUM TOURS AT SAM

Tours in English

Mondays | 2pm

Tuesdays to Thursdays | 11am & 2pm

Fridays | 11am, 2pm & 7pm

Saturdays and Sundays | 11am, 2pm & 3:30pm

Tours in Japanese

Tuesdays to Fridays | 10:30am

Tours in Mandarin

Fridays | 7:45pm

ADDRESSES

Singapore Art Museum is located at 71 Bras Basah Road, Singapore 189555.

SAM at 8Q is located at 8 Queen Street, Singapore 188535.

SAM ONLINE

www.singaporeartmuseum.sg

www.facebook.com/singaporeartmuseum

www.twitter.com/singaporeart

www.youtube.com/samtelly

ENQUIRIES

6332 3222 or 6332 3200

nhb_sam_programs@nhb.gov.sg

HOW TO GET TO SAM

By bus

SBS 7, 14, 16, 36, 111, 131, 162, 175, 502, 518
SMRT 77, 167, 171, 700

By MRT

2-minute walk from Bras Basah MRT station.
10-minute walk from Dhoby Ghaut, Bugis or City Hall MRT stations.

By car

Carparks available at Waterloo Street, Queen Street, NTUC Income Centre, Plaza by the Park, Hotel Grand Pacific and Singapore Management University.

WHEELCHAIR ACCESS/LOCKERS

Lifts provide easy access to galleries.

Lockers are available for visitors' use.

