

**PAPERMOON PUPPET THEATRE**  
(f. 2006, Indonesia)

**Suara Muara**  
(*The Sounds of the Estuary*)

2016  
Mixed media installation with fabric, rattan, wood, paper, glass bottles, metal  
Dimensions variable



Lasem, a tiny town on the northern part of Java island, is where the Lasem River meets the Java Sea. Once an important port where vessels berthed to transport a bevy of treasures to places around the world, Lasem today is like a lonely old man, who keeps his secrets quietly. While fishermen tend their nets and children play around little wooden boats, one can still find ancient shards of Chinese porcelain buried beneath its sandy beaches. *Suara Muara*, or *The Sounds of the Estuary*, brings audiences on an aural journey, where the sounds of the past still exist, in unison with the lapping of the waves.

**KARINA SMIGLA-BOBINSKI**  
(b. 1967, Poland)

**ADA**  
2010  
Installation with PVC balloons, helium, charcoal, foil, tape  
235 x 235 x 235 cm (each balloon)



ADA is an interactive art-making machine, although she does not operate in the way we would normally imagine. A post-industrial "creature" that glows with the bioluminescence of denizens of the deep, ADA floats freely and is the sole light source in her confined space. While ADA requires animation from visitors, it quickly becomes clear that we hold little sway over her. A giant sphere with charcoal studs affixed to her surface, she moves through the room, making indelible marks along the walls, ceiling and floor of the gallery. These marks are only apparent when ADA moves near them, shedding light on and highlighting the consequences of visitor interaction and similarly, our relationship with the sea.

**YUREE KENSAKU**  
(b. 1979, Thailand)

**Don't They Know It's the End of the Whale?**  
From the series '*Apex Predator*'

2016  
Acrylic on wall  
371.5 x 458.4 cm

**The Finale Fin of Shark's Fins**  
From the series '*Apex Predator*'

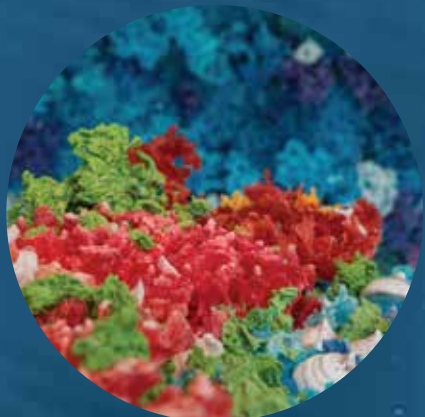
2016  
Acrylic on wall  
371.5 x 458.4 cm

**Apex Predator**  
From the series '*Apex Predator*'

2016  
Acrylic on wall  
371.5 x 458.4 cm

In accordance with the grand design of nature, animals live and feed off one another in an endless cycle known as the food chain. By virtue of its intelligence, the human sits atop this hierarchy, but its excessive greed has also led to the exploitation of the oceans. Majestic creatures such as great white sharks and blue whales are often reduced to exotic dishes to satiate the appetites of the wealthy. In three spectacular wall murals, artist Yuree Kensaku ponders the possibility of nature's survival given mankind's seemingly insatiable greed.

*The Finale Fin of Shark's Fins*, from the series '*Apex Predator*', 2016



**JANICE WONG**  
(b. 1983, Singapore)

**Underwater Labyrinth**

2011, re-created in 2016  
Installation with isomalt, chocolate, fixative, wooden tables, acrylic stands, LEDs  
Dimensions variable

Sparkling in the day and luminescent at night, artist-chef Janice Wong's *Underwater Labyrinth* features compact colonies of "corals" composed of approximately 1,100 kilograms of isomalt sugar and 200 kilograms of chocolate. This installation of confectionery is inspired by the "rainforests of the sea"; chocolate moss and marshmallows rest on beds of vibrantly stained "corals" that encrust the sides of the gallery or cascade down its walls. *Underwater Labyrinth*, as the title alludes, invites visitors to discover the wonders of a re-created deep-seabed.

**TAN ZI XI**  
(b. 1985, Singapore)

**Plastic Ocean**  
2016  
Installation with plastic, nylon string, wooden pedestals  
Dimensions variable

**An Effort Most Futile**

2008  
Inkjet on acid-free paper (set of 5)  
Dimensions variable

Garbage... garbage galore! What happens when we heedlessly throw away that much garbage? 269,000 tons of plastic debris floats on the surface of our world's oceans, creating hazardous living environments for marine life. In *Plastic Ocean*, artist Tan Zi Xi tackles the issue of pollution head-on with her recreation of the Great Pacific Garbage Patch. Comprising approximately 26,000 pieces of non-biodegradables, her installation invites viewers to experience the sensation of floating in a sea of trash. At the same time, the artwork embodies the wonders of recycling and repurposing, and the transformative power of art.



**KRIT NGAMSOM**  
(b. 1983, Thailand)

**Damien, I'm Famished**  
(*After Damien Hirst*)

2016  
Steel, acrylic, polyester resin, LEDs, dynamo  
Dimensions variable  
Edition 3 of 3

**Bryde's Fountain**  
(*After Marcel Duchamp*)

2016  
Fibreglass, steel, ceramic, cement, water pump  
170 x 327 x 160 cm

**Surrealism Spiced**  
(*After Salvador Dali*)

2011  
Fibreglass, acrylic, light box  
43 x 32 x 50 cm

Krit Ngamsom's kinetic sculptures are tongue-in-cheek references to iconic artworks that changed definitions and assumptions about art through their use of ready-made objects. These playful reinterpretations incorporate references to contemporary Thai culture with commentary on Western art-making practices. The three artworks, in particular, pay homage to artists Marcel Duchamp, Damien Hirst and Salvador Dali. They have also been adapted especially for *Imaginarium*, to explore issues concerning the oceans.

*Damien, I'm Famished (After Damien Hirst)*, 2016



**MULYANA**  
(b. 1984, Indonesia)

**Dimana Mogus?**  
(*Where is Mogus?*)

2016  
Mixed media installation with yarn, cotton, felt, synthetic fur, vulcanised copper wire and dacron filling  
Dimensions variable

The Mogus, an imaginary octopus monster, is artist Mulyana's alter ego. Laboriously crocheted from yarn, *Dimana Mogus?* invites the young and young-at-heart to frolic amidst whimsical sea monsters set in a colourful dream seascape. Through this installation, Mulyana hopes to create an environment in which visitors can interact with Mogus and his underwater friends; his soft, tactile sculptures encourage play, imagination and exploration.



## General Information

SAM is located at 71 Bras Basah Road, Singapore 189555  
SAM's annex, SAM at 8Q, is located at 8 Queen Street, Singapore 188535

### OPENING HOURS

Mondays to Sundays | 10am to 7pm  
(Last admission at 6:15pm)  
Fridays | 10am to 9pm

Visitors can also enjoy free entry to SAM every Friday from 6pm to 9pm and on Open House days.

### ADMISSION

Adults	\$10
Students & Senior Citizens aged 60 & above	\$5
Children under six	Free
20% off admission tickets for 20 or more persons.	
Citizens/Permanent Residents	Free

Tickets can be purchased from the Information & Ticketing counter at Singapore Art Museum and SAM at 8Q or from SISTIC.

### ENQUIRIES

6589 9580 or 6589 9564  
enquiries@singaporeartmuseum.sg

### MUSEUM TOURS

#### Tours in English

Mondays to Thursdays | 11am & 2pm  
Fridays | 11am, 2pm & 7pm  
Saturdays & Sundays | 11am, 2pm & 3:30pm

#### Tours in Japanese

Tuesdays to Fridays | 10:30am

#### Tours in Mandarin

Fridays | 7:30pm  
Sundays | 11:30am

Tours are not available on public holidays and selected Open House days.

### GETTING TO SAM

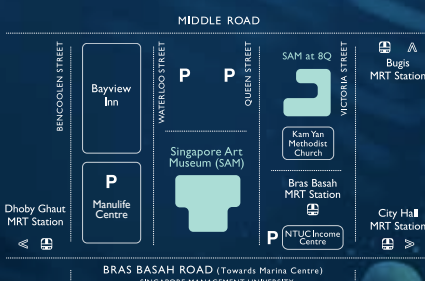
By bus  
SBS 7, 14, 16, 36, 111, 131, 162, 175, 502, 518  
SMRT 77, 167, 171, 700

### By MRT

2-minute walk from Bras Basah MRT station.  
10-minute walk from Dhoby Ghaut, Bugis or City Hall MRT stations.

### By car

Carparks are available at Waterloo Street, Queen Street, NTUC Income Centre, Manulife Centre, Hotel Grand Pacific and Singapore Management University.



### WHEELCHAIR ACCESS/LOCKERS

Lifts provide easy access to galleries.  
Lockers are available for visitors' use.

### SAM ONLINE

www.singaporeartmuseum.sg  
www.facebook.com/singaporeartmuseum  
www.instagram.com/singaporeartmuseum  
www.twitter.com/sgartmuseum  
www.youtube.com/samtelly

# imaginarium

Over the Ocean, Under the Sea  
14 May – 28 August 2016

# imaginarium

## Over the Ocean, Under the Sea

14 May – 28 August 2016

Explorers of the world! How well do we know our oceans?

*Imaginarium* 2016 – the sixth edition of SAM's children-focused annual exhibition – delves into the deep, and invites adventurers into the watery realms of the Earth as seen through the eyes of contemporary artists. The origins of both life and civilisation have been inextricably bound to the sea – we still draw much of our food from the oceans, and many of the world's greatest cities were founded as coastal settlements. Despite their importance to our survival, the oceans and seas remain susceptible to abuse and degradation.

*Imaginarium: Over the Ocean, Under the Sea* is a whimsical introduction to these many stories and ideas that surround seascapes. It presents tactile and interactive works that encourage discovery through exploration and play.

At SAM at 8Q, explorers – both young and young-at-heart – can navigate underwater realms where wonders roam. As they make the acquaintance of mysterious denizens of the deep, we hope that as protectors of the future, our visitors will also think about the impact we have on the natural world, and of how, through inventive and wise ideas, we can take better care of the Earth and its awe-inspiring oceans.

The adventure continues over at SAM, with the maritime-themed exhibition, *Odyssey: Navigating Nameless Seas*. Opening in June 2016, *Odyssey* presents works of contemporary art which seek to redefine our understanding of the oceans.

#imaginariumSG

Organised by



Supported by



Another fun programme of



### LEGEND

- The Original Selfie Machine
- Submaroom
- Imaginarium Workshop Space
- Reading Room
- Moving Image Gallery
- Lift
- Staircase
- Nursing Room
- Washroom
- Locker
- Cafe/Restaurant
- Information & Ticketing Counter
- Interactive artwork

### 1 JANICE WONG

*Underwater Labyrinth*

### 2 MULYANA

*Dimana Mogus? (Where is Mogus?)*

### 3 YUREE KENSAKU

*Don't They Know It's the End of the Whale?*  
From the series 'Apex Predator'  
*The Finale Fin of Shark's Fins*  
From the series 'Apex Predator'  
*Apex Predator*  
From the series 'Apex Predator'

### 4 KARINA SMIGLA-BOBINSKI

ADA

### 5 KRIT NGAMSOM

*Damien, I'm Famished (After Damien Hirst)*  
*Bryde's Fountain (After Marcel Duchamp)*  
*Surrealism Spiced (After Salvador Dali)*

### 6 TAN ZIXI

*Plastic Ocean*  
*An Effort Most Futile*

### 7 PAPERMOON PUPPET THEATRE

*Suara Muara (The Sounds of the Estuary)*

## PROGRAMMES

### Submaroom

Saturday, 14 May – Sunday, 28 August  
SAM at 8Q (Level 2)

What would you do to keep yourself occupied on a journey over the ocean and under the sea? Try out some of the activities housed in our Submaroom to pass the time creatively.

Museum admission fees apply. Donations encouraged.

### Beyond the Deep Blue: Short Films Screening

Saturday, 14 May – Sunday, 28 August  
Moving Image Gallery, SAM at 8Q (Level 2)  
10am – 6.45pm (Sat – Thu); 10am – 8.45pm (Fri)

Sit back, relax and enjoy a special selection of local and international short films inspired by adventures and aquatic tales while out in the deep blue.

Parental guidance is advised. Museum admission fees apply. Donations encouraged.

### The Original Selfie Machine

Saturday, 14 May – Sunday, 28 August  
SAM at 8Q | \$4 for two printouts

The Original Selfie Machine has landed on the sandy shores of SAM at 8Q! What is this magical contraption that can capture your likeness so well?

### Diver's Logbook

Available from Saturday, 14 May  
SAM at 8Q | \$2

Travel across the ocean and explore the depths of the sea with this interactive diver's logbook, as you make your way through *Imaginarium*. Appealing to all ages, the logbook is filled with activities to guide you through each artwork, and beautifully detailed illustrations waiting to be brought to life by your sketching and colouring.

### ARTIST-LED WORKSHOPS

#### Illustration Workshop with Zi Xi

Saturday, 30 July | 2pm – 3:30pm  
Tuesday, 9 August | 10:30am – 12pm  
SAM at 8Q, Imaginarium Workshop Space (Level 2)  
\$35. Tickets available at SAM and SISTIC.

Taking inspiration from the *Plastic Ocean* and *An Effort Most Futile* artworks, participants will reflect on their daily plastic consumption, wastage and its repercussions on environmental pollution, while jointly creating a mural painting with Singaporean artist and illustrator Tan Zi Xi.

#### Edible Art Workshop

Saturday, 11 June | 2pm – 4pm  
SAM at 8Q, Imaginarium Workshop Space (Level 2)  
\$60. Tickets available at SAM and SISTIC.

Unleash your inner artist as you create your own underwater labyrinth on canvas... with chocolate! Art is made fun, experimental and edible in this workshop conducted by the team behind 2am: dessertbar, 2am: lab and sweet boutique, JANICE WONG.

#### Knots Workshop for Explorers

Saturday, 23 July  
1pm – 3pm (for 4 – 12 year-olds)  
3:30pm – 5pm (for 12-year-olds and above)  
SAM Glass Hall

Free by registration. More details will be available at [www.singaporeartmuseum.sg](http://www.singaporeartmuseum.sg)

A good knot can save lives! Do you know how many different types of knots exist and what the purpose of each individual knot is? Try your hand at different knot tying techniques and learn the interesting art of bends and hitches with experts from the Republic of Singapore Navy. At the end of the workshop, you'll be well on your way to becoming a seaworthy sailor!



### ARTIST PERFORMANCE

#### Suara Muara (The Sounds of the Estuary)

by Papermoon Puppet Theatre  
Friday, 26 August | 3pm, 5pm, 7pm  
SAM at 8Q  
Ticketed event. More details will be available at [www.singaporeartmuseum.sg](http://www.singaporeartmuseum.sg)

Join us for this special night at the museum as the exhibits come alive with a performance by Papermoon Puppet Theatre, a contemporary puppet theatre in Indonesia. *Suara Muara* takes audiences on an aural journey of Lasem, a tiny town on the northern part of Java island, and the estuary upon which it sits.

### Curator-led Tour:

Family Night at the Museum  
Wednesday, 22 June | 7pm – 8pm | SAM at 8Q  
\$12. Concessions available.  
Tickets available at SAM and SISTIC.

Join us at the museum for a night of fun and parent-child bonding as SAM curator, Andrea Fam, introduces you to the artworks and brings you on a journey of discovery around *Imaginarium: Over the Ocean, Under the Sea*. Each ticket admits one child from age 7 – 15 years or one adult.

Storytelling Sessions at SAM:  
The Totally Awesomely Amazing Story of Sri Tri Buana – Descendant of the Sea  
Friday, 17 June | 11.00am – 11.45am  
Saturday, 18 June | 11.00am – 11.45am  
SAM at 8Q | \$10 per adult, \$5 per child  
Tickets available at SAM and SISTIC.

Join Rosemarie Somaiah, otherwise known as "Aunty Rose", for an imaginative and fun-filled day out with the family at the Singapore Art Museum. Through the interactive storytelling sessions, revel in the legend of a King who fell in love with the Princess of the Sea, and their life in the underwater kingdom.

### Educators Tours and Talks

Friday, 15 July | 4pm – 5:30pm | SAM at 8Q

Tours and talks are held to give educators preparing to bring students for a visit an overview of SAM's upcoming exhibitions. Join a SAM curator and SAM educator as they share the ideas and concepts behind the artworks in *Imaginarium: Over the Ocean, Under the Sea*. Each educator will be given a copy of the education resource.