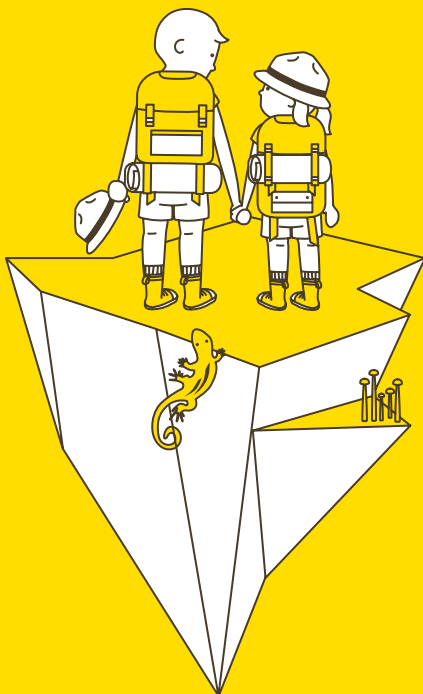




# imaginarium

To the Ends of the Earth

6 May – 27 August 2017 | SAM at 8Q



[www.singaporeartmuseum.sg](http://www.singaporeartmuseum.sg)

 [singaporeartmuseum](https://www.facebook.com/singaporeartmuseum)

 [singaporeartmuseum](https://www.instagram.com/singaporeartmuseum)

 [samtelly](https://www.youtube.com/samtelly)

#imaginariumSG

Organised by

  
singaporeartmuseum  
CONTEMPORARY ART IN SOUTHEAST ASIA

Supported by

  
Ministry of Culture, Community and Youth

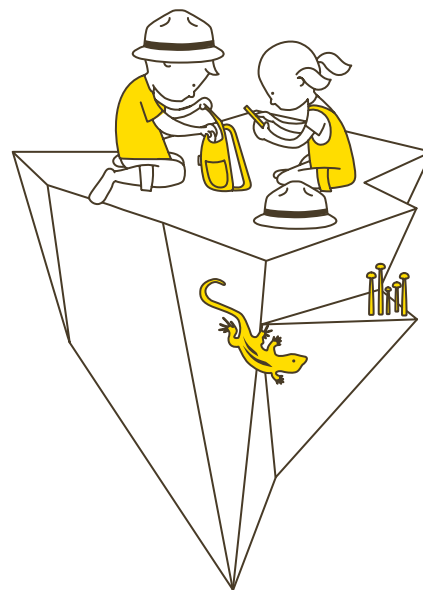
Another fun programme of

**CHILDREN'S  
SEASON**  
SINGAPORE

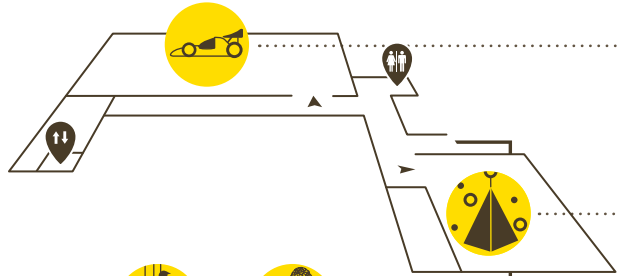


# imaginarium

To the Ends of the Earth   
6 May – 27 August 2017 | SAM at 8Q



4

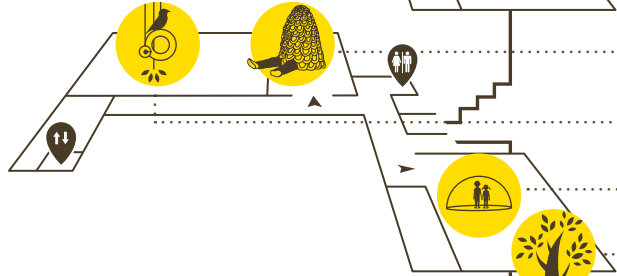


**UUDAM TRAN NGUYEN**  
*LICENSE2DRAW*

**LEGEND**

- Information & Ticketing Counter
- Cafe / Restaurant
- Lift
- Moving Image Gallery
- The Original Selfie Machine
- Ranger's Lodge
- Nursing Room
- Washroom
- Locker
- Workshop Space

3



**UNCHALEE ANANTAWAT**  
*Floating Mountain*

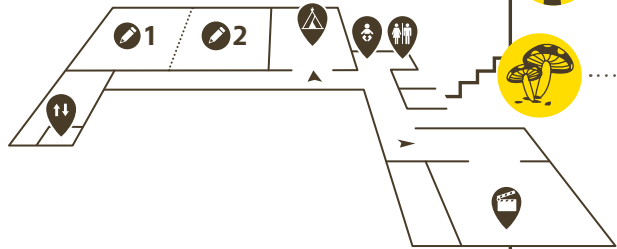
**EKO NUGROHO**  
*My Wonderful Dream*

**MARY BERNADETTE LEE**  
*Wanderland*

**NIPAN ORANNIWESNA**  
*Another Island*

**NANDITA MUKAND**  
*The Origin: The Tree and Me & The Unborn*

2



**CALVIN PANG**  
*Where am I*

1



**HIROMI TANGO**  
*Lizard Tail*

**BOUNPAUL PHOTHYZAN**  
*Lie of the Land*

# imaginarium

To the Ends of the Earth 

6 May – 27 August 2017 | SAM at 8Q

## Explorers of the land!

How much do you know about the planet we inhabit?

Singapore Art Museum welcomes you back with the seventh edition of our family-focused exhibition, *Imaginarium: To the Ends of the Earth*. Through the eyes of nine contemporary artists, this year's *Imaginarium* takes a closer look at our surroundings and the environments we reside in.

Over millennia, humankind has made vast progress in charting the lands we inhabit; globalisation and technology have meant that distant locations and far-flung communities are now easier to connect with. Yet, how much do we really know of what constitutes Earth's wonderful terrains? Consider as well how the practices of cultures are inextricably tied to the places they dwell in, and how people – either by choice or necessity – adapt to ever-changing environments. Similarly, a locale's plants and animals may also evolve unique traits to adapt to their habitats.

There remains much more to learn about Earth's magnificent marvels, with the closest adventure possibly a stone's throw away! Through inspiring and engaging artworks, we invite adventurers who visit *Imaginarium: To the Ends of the Earth* to find new ways of discovering the endlessly fascinating world around them.

**#imaginariumSG**



## BOUNPAUL PHOTHYZAN

### *Lie of the Land* 2017

Aluminium, soil, seeds  
Dimensions variable  
Collection of the Artist  
Singapore Art Museum commission

Land is coveted as a prized possession – one that many people use to measure the strength and power of a country. The landlocked country of Laos has experienced various claims over its land. Despite its independence in 1953, the country continues to bear the scars made upon its soil from past wars; Laos remains the most heavily bombed country in the world with thousands of undetonated bombs still scattered across its land. In this artwork, *Lie of the Land*, by Bounpaul Phothyzan, metal bombshells have been repurposed as planters filled with ferns, making a powerful statement about the resilience of the human spirit and one's ability to innovate in the face of obstacles.

**Bounpaul Phothyzan** (b. 1979, Laos) is a critical emerging contemporary artist whose practice in land art, performance, and installation art goes against the typical grain of contemporary thought and art production in Laos. He graduated from the National Institute of Fine Arts, Vientiane, Laos (previously known as the Faculty of Fine Arts) and has exhibited in group shows around Laos and at the Singapore Biennale (2013).



## HIROMI TANGO

### *Lizard Tail* 2016, 2017

LED lights, textile, wire, photographs, video  
Site-specific installation, dimensions variable  
Collection of the Artist

Lizards can be found in a wide variety of environments, and most lizards are well known for their ability to shed their tail when in danger, distracting predators while they make their escape. Immersing participants in a colourful and interactive soft-sculpture environment, Hiromi Tango shares tales of adaptation and survival based on the metaphor of the lizard's unique ability to regrow its lost tail. Brought to life with performances and art-making workshops, *Lizard Tail* explores the powerful potential of art-making as an agent for healing, as well as mental and emotional development.

**Hiromi Tango** (b. 1976, Japan) is a Japanese-Australian artist whose work spans sculpture, photography, installation, and performance. In recent years, her practice has become increasingly focused on exploring neuroscientific concepts through art, posing questions around neuroplasticity, empathy, and epigenetics in her quest to effect healing and well-being through art.



## NIPAN ORANNIWESNA

*Another Island* 2017

Mixed-media floor installation comprising photographs, epoxy, artist-recorded sounds  
900 x 500 cm  
Collection of the Artist  
Singapore Art Museum commission

**E**mbedded in the floor are 598 photographs of Singapore, each encased in a tiny bubble. Like a constellation of dew drops, these images of our urban landscapes, natural landscapes, and scenes of the everyday are miniscule and almost imperceptible from a distance. Nipan invites viewers to step upon the platform to look at these vignettes of Singapore from a different and more intimate perspective. How many are still recognisable? How much has changed, or remained the same? Whispers emerge from beneath the floorboards – sounds from the environment we reside in, and voices of people in conversation with Nipan, sharing their stories about the land that is their home.

**Nipan Oranniwesna** (b. 1962, Thailand) creates works focusing on mixed-media installations relating to social memory and history. He received his BFA from Silpakorn University, Thailand, and his MFA in printmaking from Tokyo National University of Fine Arts & Music. His works have been exhibited at prominent international exhibitions including the Venice Biennale (2007), the Busan Biennale (2008), and the Singapore Biennale (2013).



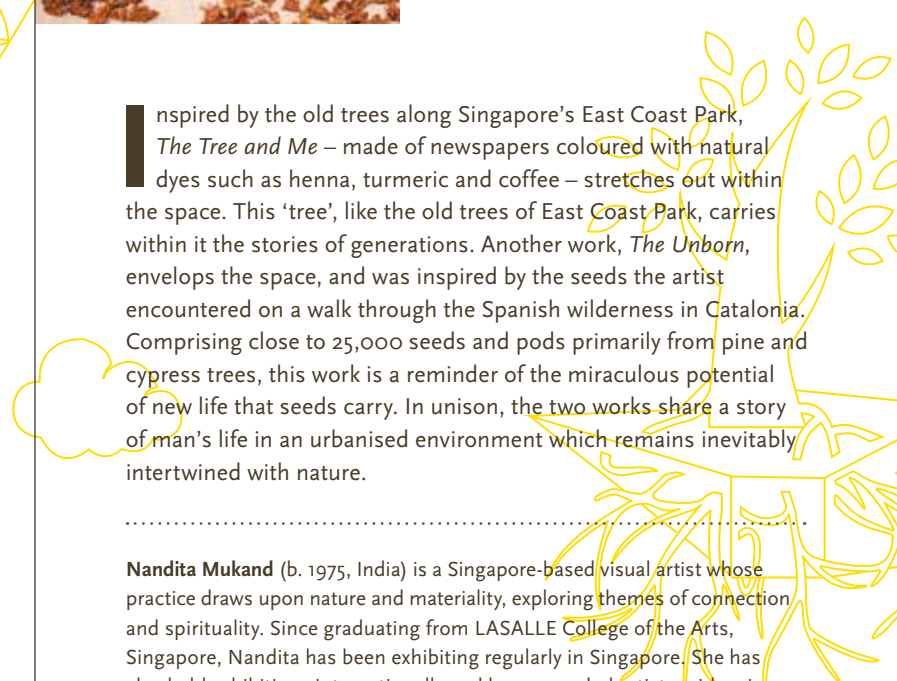
## NANDITA MUKAND

*The Origin: The Tree and Me & The Unborn* 2017

Newspaper, vegetables, grass, henna, turmeric, coffee, cypress seeds, pine cones, assorted seeds and pods, wire, fishing line  
Site-specific installation, dimensions variable  
Collection of the Artist

**I**nspired by the old trees along Singapore's East Coast Park, *The Tree and Me* – made of newspapers coloured with natural dyes such as henna, turmeric and coffee – stretches out within the space. This 'tree', like the old trees of East Coast Park, carries within it the stories of generations. Another work, *The Unborn*, envelops the space, and was inspired by the seeds the artist encountered on a walk through the Spanish wilderness in Catalonia. Comprising close to 25,000 seeds and pods primarily from pine and cypress trees, this work is a reminder of the miraculous potential of new life that seeds carry. In unison, the two works share a story of man's life in an urbanised environment which remains inevitably intertwined with nature.

**Nandita Mukand** (b. 1975, India) is a Singapore-based visual artist whose practice draws upon nature and materiality, exploring themes of connection and spirituality. Since graduating from LASALLE College of the Arts, Singapore, Nandita has been exhibiting regularly in Singapore. She has also held exhibitions internationally and been awarded artist residencies, including the Fundacio L'Olivar in Spain and the Hawkesbury Regional Gallery in Australia.





## EKO NUGROHO

### *My Wonderful Dream* 2017

Wallpaper, fiberglass, paper, plastic,  
cotton fabric  
Dimensions variable  
Collection of the Artist

In his work, *My Wonderful Dream*, artist Eko Nugroho imagines lands without borders – where fantastical characters float freely across islands and continents, and where people recognise the similarities rather than differences within each culture. *My Wonderful Dream* suggests that life would be beautiful if we lived in peace, happiness, tolerance, and togetherness, but it also ponders the reality of humanity's complex psyche. With our yearning for advancement, and with the pressures of rapid change introduced by globalisation and technology, is a harmonious world achievable or is it just a dream?

**Eko Nugroho** (b. 1977, Indonesia) is one of Indonesia's most acclaimed contemporary artists. With a background in street art and comics, Nugroho grounds his practice in community social life. He uses humour to discuss Indonesia's transition to democracy, a quest for diversity and the friction of traditional ideals in modern urban life, in his paintings, murals, illustrations, sculptures, and embroidery works.



## MARY BERNADETTE LEE

### *Wanderland* 2017

Cotton textile, applied print illustration on  
textile, wire, rattan, bell chimes  
Dimensions variable  
Collection of the Artist  
Singapore Art Museum commission

Bulb-like hangings that spring back upon release; teepee tents with hanging mobiles suspended from within; textile birds flapping across trees... these are just some of the mesmerising objects that make up *Wanderland* by Mary Bernadette Lee. With its interactive and immersive nature, *Wanderland* evokes vivid memories and imaginings of our experiences with the natural environment, be it a trek through the tropical rainforest or a stroll through a park.

**Mary Bernadette Lee (Mrydette)** (b. 1985, Singapore) is a Singapore-based artist and illustrator whose practice explores the relationship between the physiological and the psychological. She uses her art to engage with children and underprivileged communities in Singapore. Mary graduated from Nanyang Technological University School of Art, Design and Media, Singapore in 2014 with a BFA (Hons) in Visual Communication.



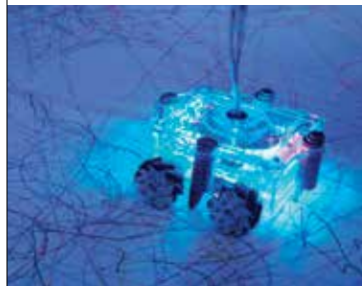
## UNCHALEE ANANTAWAT

*Floating Mountain* 2013, 2017

Paper mache, wood, fibreglass, resin, yarn, rope, acrylic paints on metal structure  
Dimensions variable  
Collection of the Artist

**F**loating *Mountain* is inspired by one of many imaginary landscapes that the artist Unchalee has explored in her dreams. The artist has a vivid memory of jumping from a floating mountain into an azure blue sea. Revisiting these magical lands numerous times in her reverie, Unchalee has started to find similarities between these dreamscapes and the waking world. Charged with adventure, the work expresses the artist's certainty that there are indeed other worlds – be they dream-worlds or universes that humans have yet to explore. In recreating *Floating Mountain*, Unchalee shares with viewers a glimpse of what this other world might be.

**Unchalee Anantawat** (b. 1982, Thailand) produces works involving the idea of other-worldly creatures. She is currently interested in naïve art which shows in her child-like drawings and 'anti-professional aesthetics'. She developed her art practice while studying animation at the Royal Melbourne Institute of Technology.



## UUDAM TRAN NGUYEN

*LICENSE2DRAW* 2014 – 2017

L2D robot, L2D app, electronics, Arduino software, webcam cameras, IP cameras, canvas, colour pens, Mac laptop  
Dimensions variable  
Collection of the Artist

**L**ICENSE2DRAW by UuDam Tran Nguyen revolves around the internet's ability to instantly connect people around the world. This robotic drawing machine, which drags marker pens across a sprawling canvas, is operated via the L2D application downloaded onto mobile phones. *LICENSE2DRAW* can be accessed and activated from anywhere in the world, highlighting how our once vast and uncharted world has now become 'accessible' with one simple 'click'. However, in tandem with the conveniences that the digital age has presented, comes the responsibility of the individual as well as the collective unit to extend social decorum into the realm of the internet. *LICENSE2DRAW* tracks in real time, how we connect, communicate, interact and negotiate.

**UuDam Tran Nguyen** (b. 1971, Vietnam) lives and works in Vietnam and Los Angeles. His transnational experiences are reflected in a rich body of work that span choreographed performance, video, sculpture, drawing, drone painting and installation. He is interested in the concept of crowdsourcing, and is working on a multi-phased project that addresses regional conflicts in the global context.

Download the "License2Draw" app and video call "License2 Draw" via Skype to view and interact with the artwork remotely.





## CALVIN PANG

*Where am I* 2017

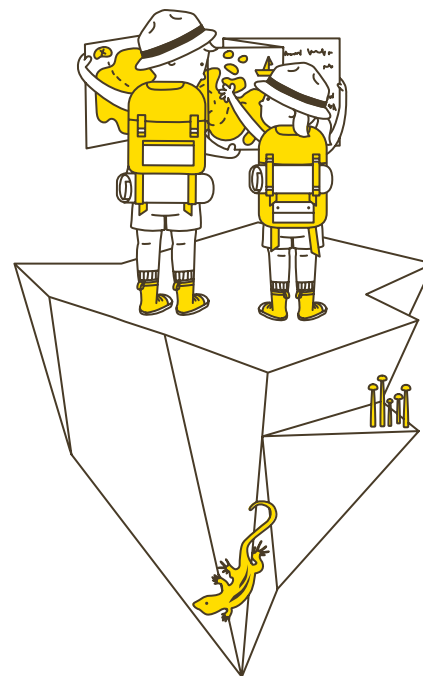
Dried white beech mushrooms with pigment ink, baking soda  
Dimensions variable  
Collection of the Artist  
Singapore Art Museum commission

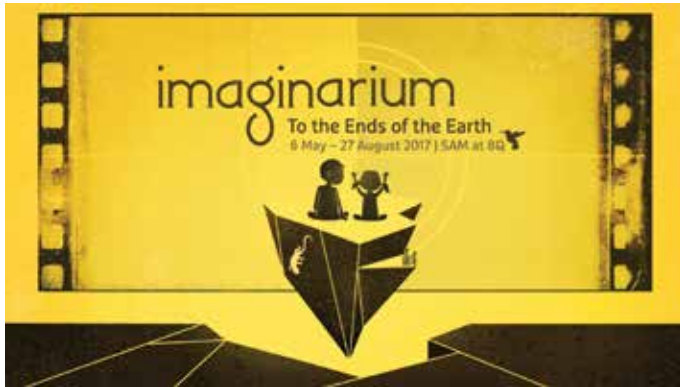
In today's fast-paced world, where we are inundated with information and the stresses of everyday living, we rarely take note of, or appreciate our surroundings. Calvin Pang's *Where am I* encourages close observation and a sense of awareness about our surroundings, piquing our wonderment and curiosity. Sited in oft-overlooked corners of the museum, *Where am I* is a series of clustered mushrooms painted in vivid colours. This whimsical work attempts to illustrate how surprises come in all shapes and sizes, and can be found even in our most well-trodden routes – and the delight one experiences in making these discoveries.

Calvin Pang (b. 1986, Singapore) produces works that are made up of the ordinaries in life, solitary interludes and encounters with people. Along with his 3D art practice, he also documents his existence through photographs, drawings and on occasion, words. He is currently undertaking his postgraduate studies in Art Therapy at LASALLE College of the Arts, Singapore.



## PROGRAMMES





## IMAGINARIUM SHORT FILMS

Saturday, 6 May – Sunday, 27 August 2017 | Moving Image Gallery, Level 2  
Free with museum admission. Donations encouraged.  
Total run time: 44 min on loop. Parental guidance is advised.

Enjoy a special selection of short films inspired by the vastness of distant lands at the Moving Image Gallery.



### *An Object at Rest*

**Seth Boyden**, 2015, USA  
5:43 min, no dialogue  
Singapore Premiere

*An Object at Rest* follows the life of a stone over the course of millennia. With the eventual interruption of its peaceful slumber, the animation tells of the stone's adventures facing nature's greatest obstacle: human civilisation.



### *Pale Blue Dot*

**Chin Li Zhi**, 2015, Singapore  
4:00 min, English with subtitles  
Singapore Premiere

Set to the words of Carl Sagan, *Pale Blue Dot* situates human history against the tapestry of the cosmos. Through a combination of art styles interwoven with music, this animation reminds us that despite our differences, we are the same species living together on Earth.



### *Builders (Kattumaanar)*

**Eysham Ali**, 2016, Singapore  
9:15 min, Tamil with English subtitles

A story of two different people on the same journey, this short film is about an Indian migrant worker who finds a wallet belonging to a Chinese migrant worker, and is conflicted about whether he should return it.



### *The Little Reader (Ang Munting Mambabasa)*

**Inshallah Montero**, 2015, Philippines  
6:55 min, Tagalog with English subtitles  
Singapore Premiere

Manuel, a young Filipino boy who lives on the street, escapes his realities through reading – a gift that his mother left behind. Stumbling upon a magical book that transports him to different worlds, he realises how far one can go through reading and imagination.



### *Way of Giants (Caminho dos Gigantes)*

**Alois Di Leo**, 2016, Brazil  
11:52 min, no dialogue  
Singapore Premiere

A poetic search for purpose and reason set in a forest of gigantic trees, this animation follows Oquirá, a six-year-old indigenous girl, as she challenges her destiny and learns to understand the cycle of life.



### *Snowflake (Snejinka)*

**Natalia Chernysheva**, 2012, Russia  
5:46 min, no dialogue

A little African boy receives a paper snowflake enclosed in a letter, and is so enchanted by the idea of real snow that he fantasizes into being a new snow-covered world.

## IMAGINARIUM OPEN HOUSE

Sunday, 25 June | Wednesday, 9 August  
10am – 7pm

Free entry for all to *Imaginarium: To the Ends of the Earth* on open house days! Bring the whole family and join us for workshops and hands-on activities around the museum.

## ART WORKSHOPS

### Growing the Lizard Tail

Monday, 5 June  
11am – 12pm, 2pm – 4pm

Create your own lizard tail sculptures to add on to Hiromi Tango's growing *Lizard Tail* artwork installation!

Recommended for children aged 3 and above. Children must be accompanied by an adult.

### Create a Dream Mobile

Sunday, 18 June | 2pm – 3.30pm  
\$18\*

Create your own dream mobile with surreal wood cut-outs created by *Floating Mountain* artist Unchalee Anantawat.

Each ticket admits a parent-child pair, or a single pax above 13 years. Children must be accompanied by an adult.

### Toddler Art Workshops

Tuesdays, 30 May – 20 June  
10.30am – 11.30am, 3pm – 4pm

Saturdays, 13 May – 12 August  
10.30am – 11.30am  
\$35

Journey through *Imaginarium: To the Ends of the Earth* and join us in a parent-and-child art-making session!

Recommended for children aged 18 months to 3 years old. Children must be accompanied by an adult. Pre-register at [www.singaporeartmuseum.sg](http://www.singaporeartmuseum.sg)

## ECO-LIVING WORKSHOPS

### Family Bonding with Herb in a Cup

Saturday, 10 June | 2.30pm – 4pm  
\$50\*

Learn how to make terrariums, compost, herb racks and more at this parent-child workshop, and take home a mushroom-in-a-cup kit along with your creations!

Each ticket admits a parent-child pair. Children must be accompanied by an adult.

### Kids Workshop: Grow and Go Green

Thursday, 15 June | 10.30am – 12pm  
\$50\*

This workshop, tailored for children 8 to 12 years, teaches young ones how to make terrariums and mini herb gardens, and shares tips on recycling and growing our own food in an urban setting.

### Leafy Tote Bag Workshop

Thursday, 8 June | 10.30am – 12pm  
(Recommended for ages 7 to 12)

Saturday, 17 June | 2.30pm – 4pm

(Parent-child workshop, suitable for children 4 and above)

\$29\*

Utilising felt pieces and printmaking techniques, create your own tote bags with motifs inspired by fallen leaves that we often overlook.

### DIY Natural Cleaning with

#### Eco Enzymes

Saturday, 22 July | 2.30pm – 4.30pm  
\$5\*

Learn how to make non-toxic cleaning solutions for the home and garden by upcycling fruit and vegetable scraps!

\*20% discount for 2 tickets or more

## TOURS

### Family Night at the Museum

Wednesday, 7 & 21 June  
7pm – 8pm  
\$12\*

Join us for an after-hours adventure at the museum as you journey through and explore the artworks in *Imaginarium: To the Ends of the Earth*.

Recommended for children aged 7 and above. Children must be accompanied by an adult.

\*20% discount for 2 tickets or more

## MERCHANDISE

### Imaginarium Adventure Kit

\$5

Grab this Adventure Kit before you begin your exploration of *Imaginarium: To the Ends of the Earth*!

Use each item – *Imaginarium Ranger's Handbook*, a magical 4-colour pencil and a set of all-seeing binoculars – wisely. Items sold separately at \$2 each.

### The Original Selfie Machine

\$2

Capture a snapshot of your adventure at the museum with these photobooth print-outs of you and your fellow explorers!

## SCHOOL TOURS AND WORKSHOPS

Offer your students a multidisciplinary and holistic contemporary art experience at *Imaginarium: To the Ends of the Earth* with these guided tours and workshops.

For more information on guided tours, self-directed visits and school workshops, visit [www.singaporeartmuseum.sg/education](http://www.singaporeartmuseum.sg/education)

### Guided Tours for Schools

Weekdays | 10.30am, 12pm, 2.30pm  
Free. By Request Only.

### School Workshops

Weekdays | 10.30am, 2.30pm  
\$15 – \$30 per pax

This programme is eligible for the Tote Board Arts Grant Subsidy and is endorsed under the NAC-AEP for pre-schools.

For more programmes, visit [www.singaporeartmuseum.sg/programmes](http://www.singaporeartmuseum.sg/programmes)



## SINGAPORE ART MUSEUM GENERAL INFORMATION

---

### SAM at 8Q

8 Queen Street, Singapore 188535

---

### OPENING HOURS

Saturdays to Thursdays | 10am to 7pm  
Fridays | 10am to 9pm

---

### ADMISSION

Adults	\$6*
Students & Senior Citizens	\$3
Children under six	Free

Singaporeans / Permanent Residents  
Free

\*20% off admission tickets for 20  
or more persons.

Free entry to SAM at 8Q every Friday  
from 6pm to 9pm and on Open House  
days (25 June & 9 August)

Tickets can be purchased from the  
Information and Ticketing Counter at  
SAM at 8Q or from SISTIC.

---

### ENQUIRIES

6589 9550  
enquiries@singaporeartmuseum.sg

### MUSEUM TOURS

#### TOURS IN ENGLISH

Mondays to Thursdays	11am & 2pm
Fridays	11am, 2pm & 7pm
Saturdays & Sundays	11am, 2pm & 3.30pm

.....

#### TOURS IN MANDARIN

Fridays	7.30pm
Sundays	11.30am

.....

#### TOURS IN JAPANESE

Tuesdays to Fridays	10.30am
---------------------	---------

Tours are not available on public  
holidays and Open House days.

---

### GETTING TO SAM at 8Q

#### By bus

7, 14, 16, 36, 77, 111, 131, 162, 167, 171, 175,  
502, 518, 700

#### By MRT

2-minute walk from Bras Basah MRT station,  
10-minute walk from Dhoby Ghaut, Bugis  
or City Hall MRT stations.

#### By car

Carparks are available at Waterloo Street,  
Queen Street, NTUC Income Centre,  
Manulife Centre, Hotel Grand Pacific  
and Singapore Management University.

---

### STROLLERS, WHEELCHAIR ACCESS AND LOCKERS

Lifts provide easy access to all galleries.  
Lockers are available for visitors' use.

